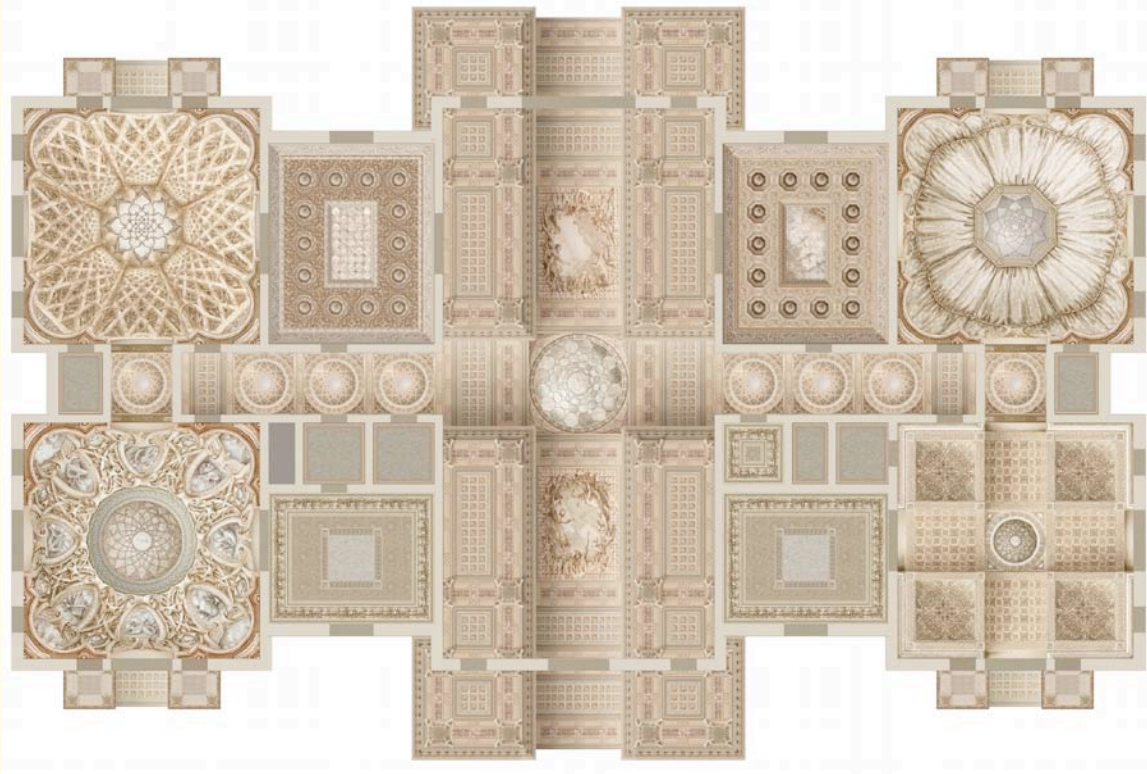


KURT WENNER

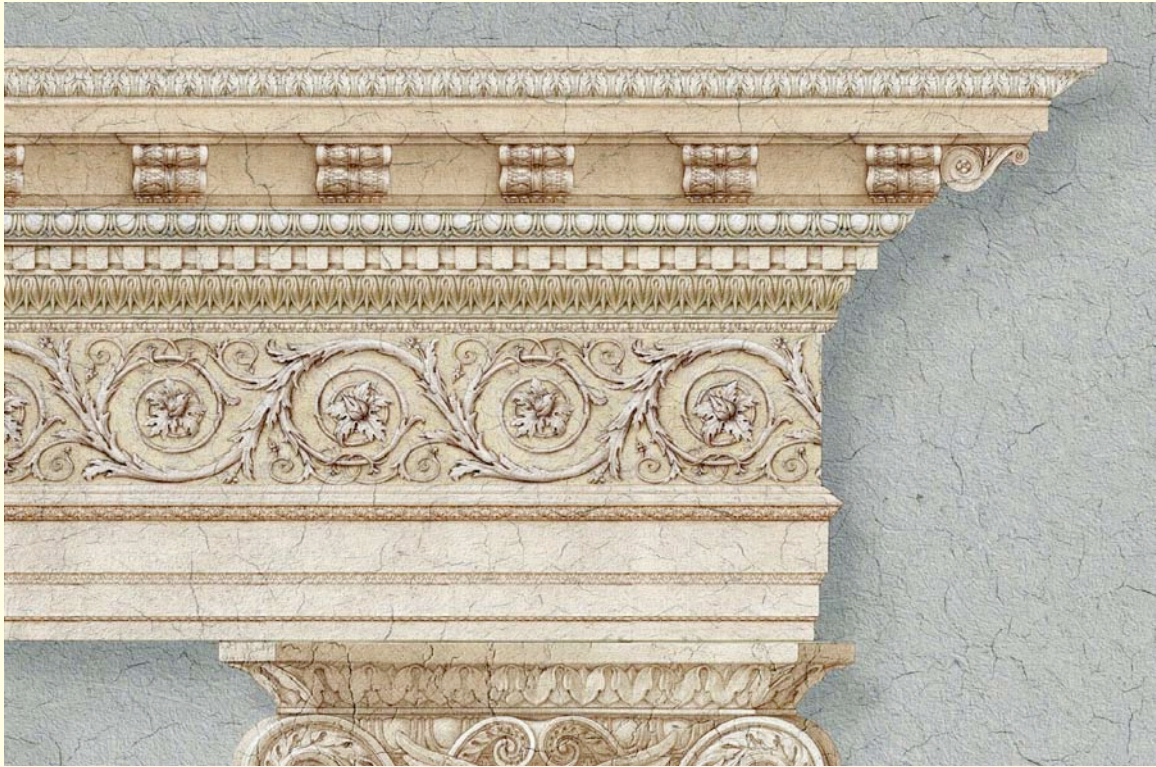
Architectural Design



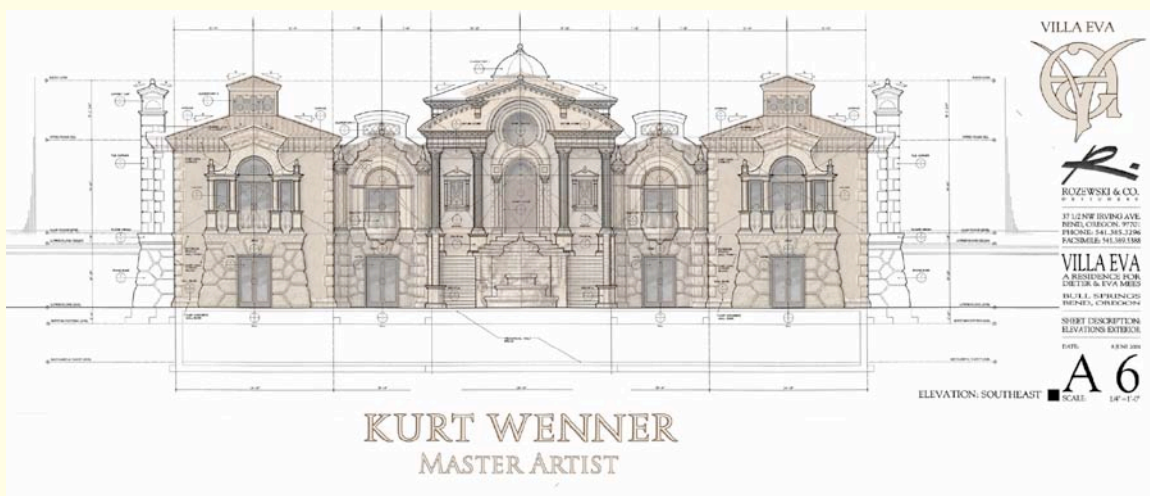
For many years, Wenner worked alongside many prestigious architectural firms in Santa Barbara and Montecito, California. Before he began designing projects from the ground up, he had decorated a number of large public and private venues. This often entailed retrofitting his artwork into places that had been designed and built without bearing in mind any kind of embellishment. He therefore found the idea of creating spaces specifically designed to incorporate his work very appealing. He began working on commissions that enabled him to create structures as unified artistic works.



His knowledge of historical geometric techniques and proportional theory allow him to combine whimsical and eclectic elements with rigorous organization. Placing equal importance on the art and architecture sets his services apart from ordinary architects who design the structure and then contract outside for the details. By designing and executing the decorative elements such as, columns, capitals, moldings and facings, the structure achieves a uniquely cohesive artistic expression.



After consulting with the client, each project starts with a simple compositional sketch that usually includes the floor plans and one elevation. Changes may be made to the floor plan if desired, and other elevations are then sketched. This service is billed at a daily rate and the client is free to use any of the ideas presented even if they choose not to retain Wenner's services past this stage.



KURT WENNER
MASTER ARTIST

VILLA EVA

PLAN: MAIN FLOOR

LEGEND:

- STAIRS
- HALLWAYS
- CLIMBERS
- CLIMBERS
- CLIMBERS
- CLIMBERS

VILLA EVA
A. ROZEWICKI & CO.
1111 11th Street, N.W.
Washington, D.C. 20004

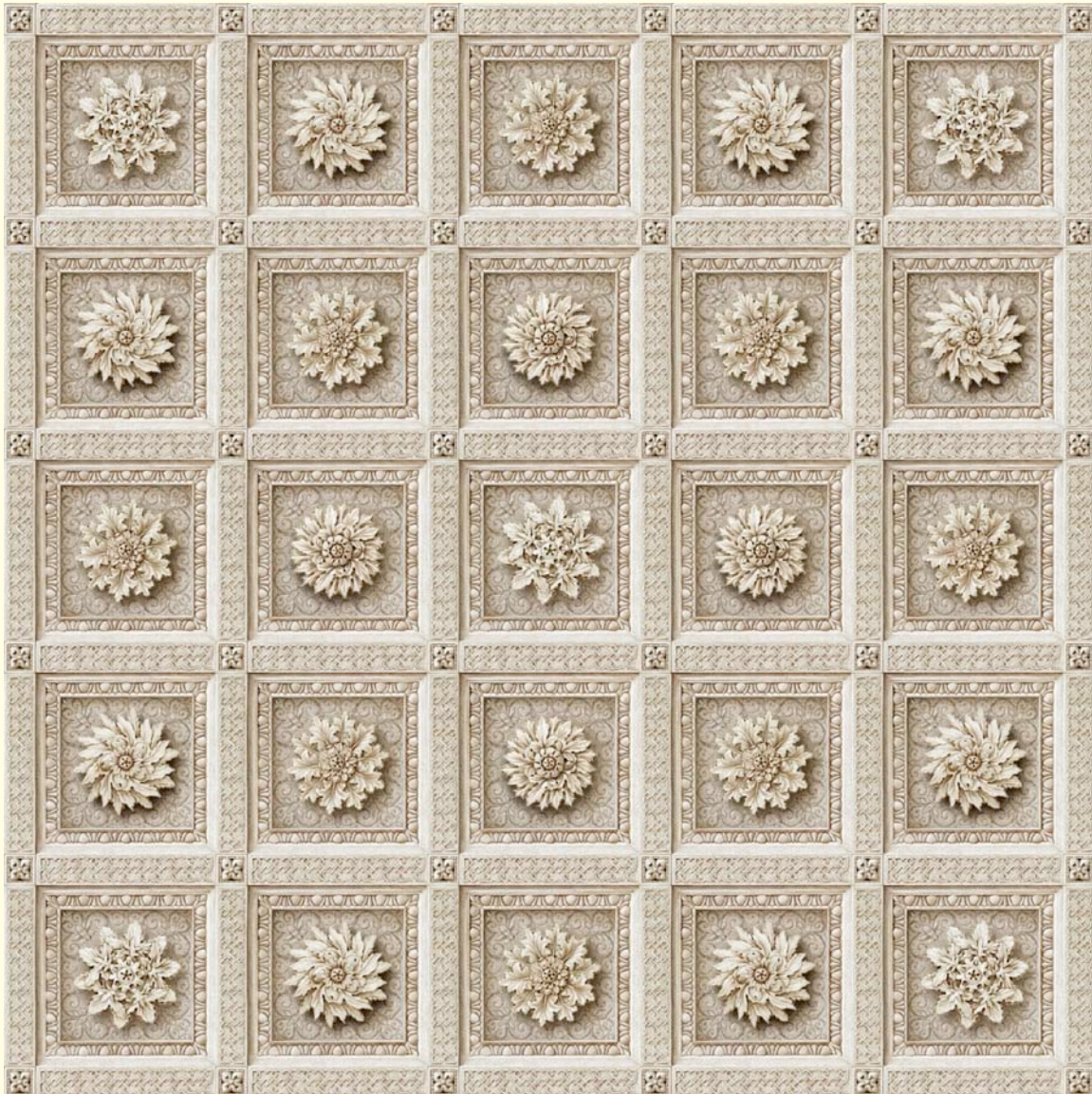
VILLA EVA
A. ROZEWICKI & CO.
1111 11th Street, N.W.
Washington, D.C. 20004

LEGEND:

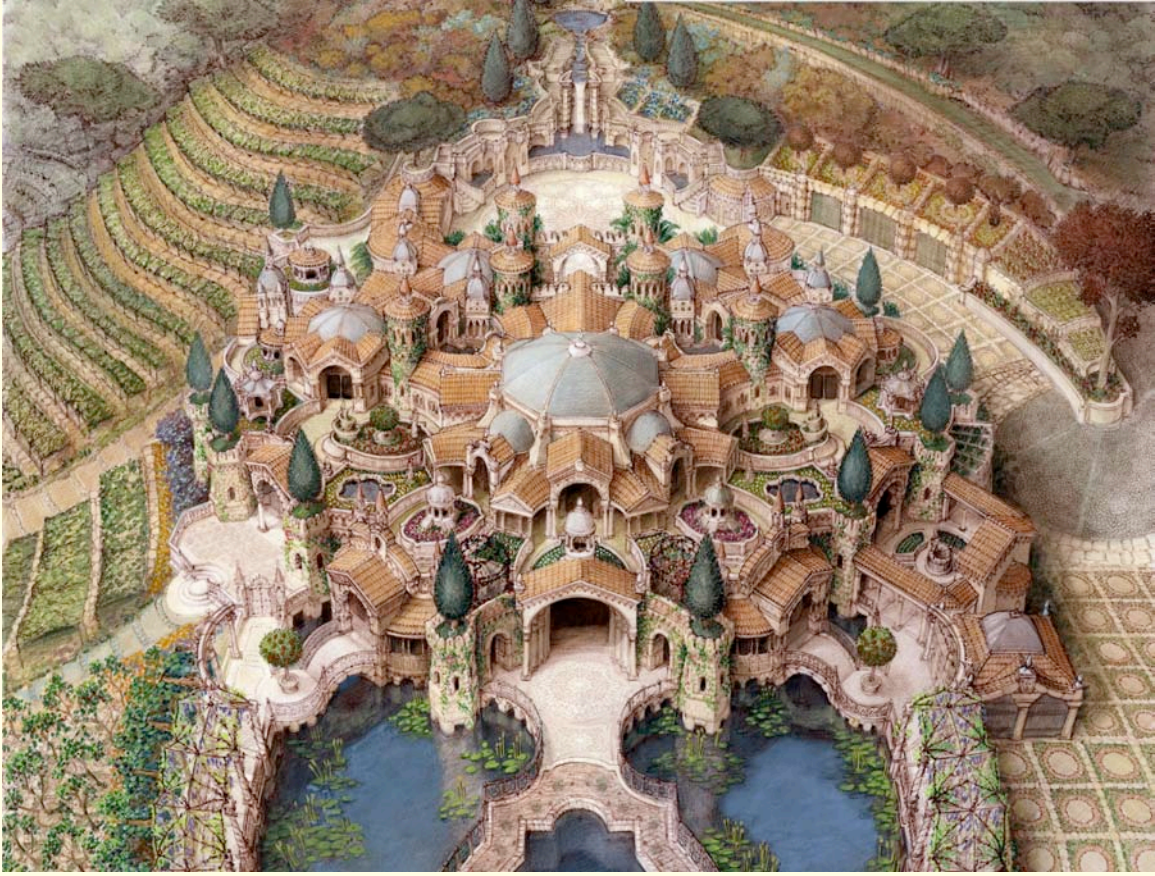
- STAIRS
- HALLWAYS
- CLIMBERS
- CLIMBERS
- CLIMBERS
- CLIMBERS

SCALE: 1/4" = 1'-0"

Wenner's drawings of the project enable the architect and contractor to start building, while Wenner works on creating the decorative details. The decorative work starts as soon as the construction begins. As crown molding, sculptural relief, paintings, etc. are finished they are labeled and crated so the contractor can access the materials for installation. It is important that the finish work is ready and waiting so as not to cause any delays; allowing the construction to flow as quickly as possible.



For large-scale projects such as hotels, resorts and churches, a number of new materials and techniques including digital printing, laser pantography and silicone molds can be used to reduce the production costs of producing rich and detailed environments. In addition to creating the measured drawings, Wenner can provide large high-resolution files for the two-dimensional art, as well as produce specialty molds and supervise cast decorations.



If you have questions regarding the process please don't hesitate to ask.

Questions? Need More Information?

Due to time zone changes, email is often the best way to reach us:

masterartist@kurtwenner.com

Architectural Decorations

Kurt Wenner employs a wide variety of materials and techniques, both traditional and contemporary, for interior architectural decoration. Large-scale murals and decorative paintings can be executed in traditional media such as oil on canvas, or be produced as high quality and durable digital prints. Digital media provide durable and washable surfaces that hold up well in humid environments. They are colorfast and can be replaced in case of damage.



This 8-meter by 13-meter painting was done in oil paint on canvas. Today, digital art is an option for many buildings.



An illusionistic mural gives a feeling of added height to an environment. The painted mural is complemented by cast decoration and detail.



In this Pompeian-style bath, the cast walls give the feeling of ancient frescos and the decorative moldings are cast from real seashells.



In this environment all the details are cast and faux finished to give a tactile and visual experience.

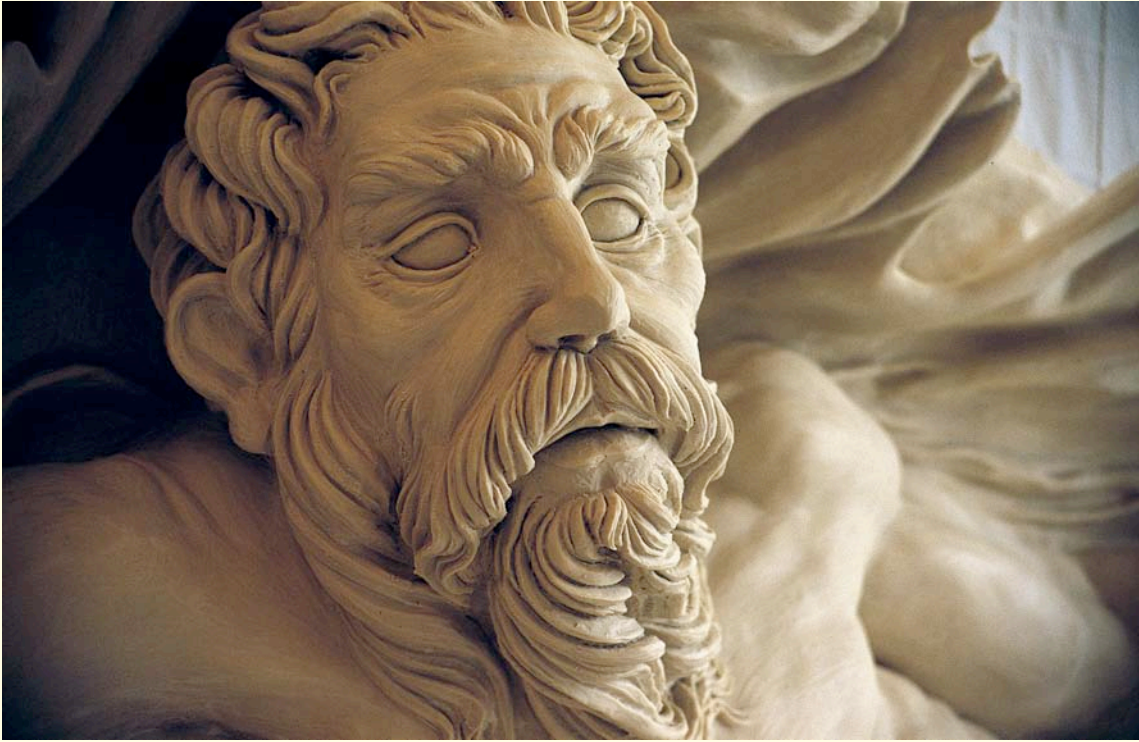




The drapery in this bath is created using a special casting process with high-resolution silicon molds to reproduce the fine texture of the fabric in the cast piece.



The sculptures on the façade were created using cast stone. The hollow-cast work weighed 250 kilograms and was light enough to be lifted to the pediment with ropes.



The model for the sculpture was created in plastilina clay, and the work was cast in stone resin and reinforced with fiberglass. A light sand blasting brought out the texture of the stone.



The façade of this pool house was done in hand-painted Majolica tile at a factory in Italy. Digital files can also be used to create fired ceramic murals.





This ceiling coffer design (left) combines Greek motifs with a popular Renaissance geometrical tiling. It was executed in plaster relief (right).

All of Wenner's decorative work and architectural designs begin with tonal drawings. This gives a client the ability to review the designs and make comments before the execution of the work begins. The tonal drawings also are an important means of coordinating the various materials and techniques into a unified vision.

The description above is for preliminary discussion purposes only.

Master Artist Programs, LLC
809 Lark Drive, Fernley NV 89408
(702) 425-4159



Interior design elements may be coordinated with the architectural decoration. This hand-painted Majolica plate was fired in Deruta, Italy.